



# Babies by the Bay

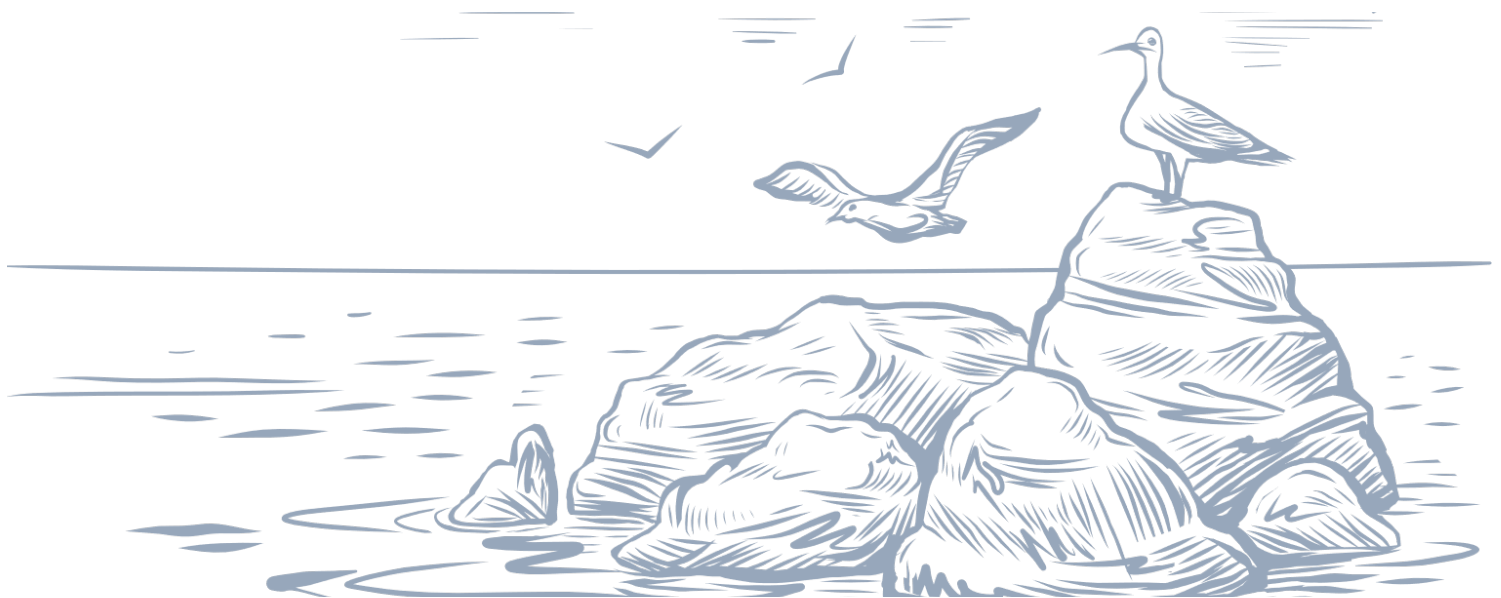
24- 25 July 2025 | Rydges Geelong, Vic

## Program for Thursday 24<sup>th</sup> July

12.30 pm	Registration Opens
1.00 pm	Acknowledgement, Welcome and Introductions. <i>Emma Yeomans, Victoria Branch Chair</i>
1.15 – 1.30 pm	Case Study Introduction. <i>Amanda Whitehouse, Royal Children's Hospital, Melbourne &amp; Vic Branch committee member</i>
1.30 – 1.45 pm	Brain and HIE Pathophysiology. <i>Helen Patterson, University of Melbourne &amp; Vic Branch committee member</i>
2.15 – 2.30 pm	Presentation and Diagnosis. <i>Amanda Whitehouse, Royal Children's Hospital, Melbourne &amp; Vic Branch committee member</i>
2.30 – 3 pm	Awaiting retrieval – what you need to do! <i>Narelle Wiseman, Cabrini Health</i>
3 – 3.30 pm	Afternoon Tea and Exhibition
3.30 – 3.50 pm	Facilitating neuro-protective care. <i>Erin Church, Mercy Hospital for Women &amp; Vic Branch committee member</i>
3.50 – 4.20 pm	Protecting the gut and supporting breastmilk feeding. <i>Sharon Perrella, The University of Western Australia</i>
4.20 – 4.50 pm	Panel Q & A session

	ACNN Member Price	Non-Member Price
Thursday (½ day)	\$55.00	\$77.00
Friday (full day)	\$104.50	\$126.50
Both days	\$159.50	\$203.50

[REGISTER HERE](#) or  
Scan the QR Code





# Babies by the Bay

24- 25 July 2025 | Rydges Geelong, Vic

## Program for Friday 25<sup>th</sup> July

8 am	Registration Open
8.25 am	Welcome and Housekeeping. <i>Emma Yeomans, Victoria Branch Chair</i>
8.30 – 9.10 am	PIPER: charting, stabilisation and transfer. <i>Dr Ian Tang, Geelong</i>
9.10 – 9.40 am	Understanding the admission and intensive care experience and Preparing the family for their neonatal experience. <i>Samantha Best, Monash Health</i>
9.40 – 10.00 am	Emotional and Traumatic Impact on Families. <i>Elise Cowan, Monash Health</i>
10 – 10.30 am	Morning Tea and Exhibition
10.30 – 11.10 am	Diagnostics and Monitoring – seizure activity, aEEG, MRI. <i>Dr Lupe Alda, Mercy Health</i>
11.10 – 11.40 am	Pharmacological Management. <i>Therese McCafferty, Monash Health</i>
11.40 – 11.55 am	Therapeutic Hypothermia and Rewarming Protocols. <i>Samantha Best, Monash Health</i>
11.55 – 12.15 pm	Panel Q & A session
12.15 – 1.15 pm	Lunch and Exhibition
1.15 – 2.15 pm	Facilitating developmentally supportive care in the neonatal environment. <i>Kirsty Minter, Grace Centre for Newborn Care</i>
2.15 – 3 pm	What’s in the update? And the Companion Toolkit. Neonatal Standards Version 5 release. <i>Melissah Burnett, ACNN Vice-President</i>
3 – 3.30 pm	Afternoon Tea
3.30 – 4 pm	Facilitating nutrition, feeding, bonding and early attachment. <i>Sharon Perrella, The University of Western Australia</i>
4 – 4.20 pm	Transition Home. <i>Arnie Krishnan, Barwon Health</i>
4.20 – 4.45 pm	Outcomes and Follow-up. <i>Gemma Willey, Barwon Health &amp; St John of God Hospital, Geelong</i>
4.45 pm	Close <a href="#">REGISTER HERE</a> or Scan the QR Code

	ACNN Member Price	Non-Member Price
Thursday (½ day)	\$55.00	\$77.00
Friday (full day)	\$104.50	\$126.50
Both days	\$159.50	\$203.50

